

Specifications

| DESCRIPTION | VALUE | STANDARD |
|---------------------|--------------------------|----------|
| Total Thickness | 0.24" (6 mm) | — |
| Wearlayer Thickness | 0.08" (2 mm) | — |
| Weight | 1.89 lbs/ft ² | — |
| Size (Interlocking) | 25" x 25" (635 mm) | — |
| Size (Square) | 24" x 24" (610 mm) | — |

CLASSIFICATION

| | | |
|---|--------------------------------------|------------------|
| Electrical Resistance | $2.5 \times 10^4 < Rt < 10^7 \Omega$ | ANSI/ESD STM 7.1 |
| Static Electrical Propensity | < 100 v | ANSI/ESD 97.2 |
| Protection Against Electrostatic Discharges | Fully Compliant | ANSI/ESD S20.20 |
| Coefficient of Friction | 0.80 (Dry) / 0.82 (Wet) | ASTM D2047 |

DURABILITY

| | | |
|---|--------------------|------------|
| Static Load (250psi) | 0.001" | ASTM F970 |
| Rolling Load (500 cycles @ 100 lbs) | 0.000" (no change) | ASTM F2753 |
| Indentation Hardness (Type A Shore Durometer) | 95 | ASTM D2240 |
| Dimensional Stability | ≤ 0.25% | ASTM D1204 |

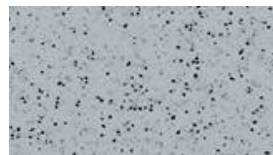
ENVIRONMENT/INDOOR AIR QUALITY

| | | |
|--------------------|------------------------|-------------|
| TVOC After 28 Days | < 10 µg/m ³ | ISO 16000-6 |
|--------------------|------------------------|-------------|

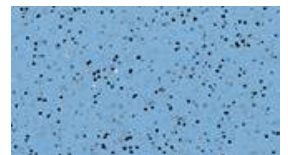
Available Colors



Light Gray



Dark Gray



Blue
(special order)

Staticworx®

4706 Waterbury-Stowe Rd.
Waterbury Center, VT 05677

staticworx.com

617-923-2000
f: 617-467-5871
info@staticworx.com