

STATICWORX ESD BOLT CHAIRS

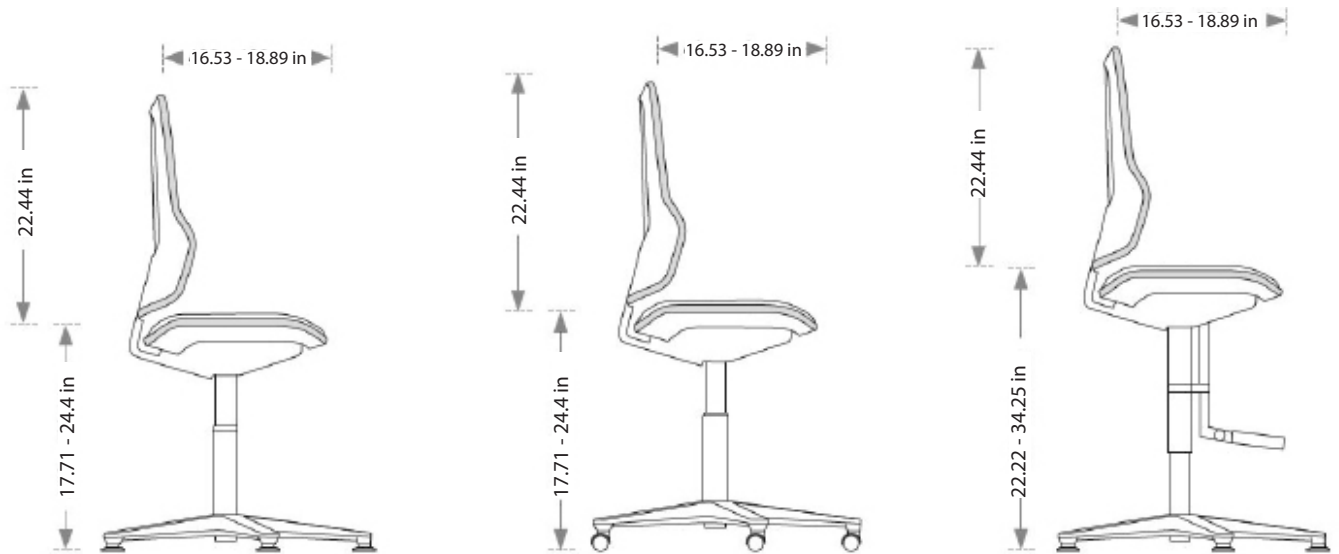
NEW GENERATION WORKPLACE CHAIRS



BOLT ESD SEATING

Bolt cuts a fine figure in ESD-protected workspaces, such as electronics manufacturing, clean rooms and labs, as well as critical call centers and other end-user spaces. This is due to its outstanding industrial-ergonomic design, combined with a wide choice of upholstery and optional features.

- Low maintenance
- Washable
- Robust
- Easy to repair
- Tough, durable
- 10 year limited warranty
- Economical
- Adaptable
- Flexible
- Conforms to body shape
- Ergonomic
- Easily configurable
- Upholstery easy to change
- Safe
- Sustainable
- Meets ANSI/ESD S20.20

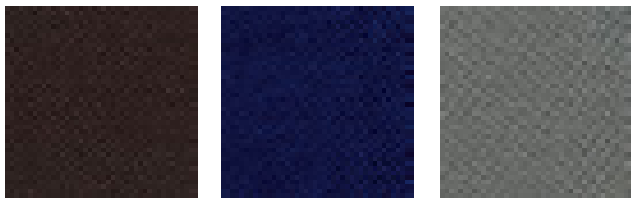


	BOLT 1 (with guides)	BOLT 2 (with castors)	BOLT 3 (high with mounting aid and glides)
SEAT HEIGHT	17.71 - 24.40 in	17.71 - 24.40 in	22.22 - 34.25 in
SEAT WIDTH	18.50 in	18.50 in	18.50 in
SEAT DEPTH	16.53 - 18.89 in	16.54 - 18.89 in	16.53 - 18.89 in
BACKREST HEIGHT	22.44 in	22.44 in	22.44 in



UPHOLSTERY

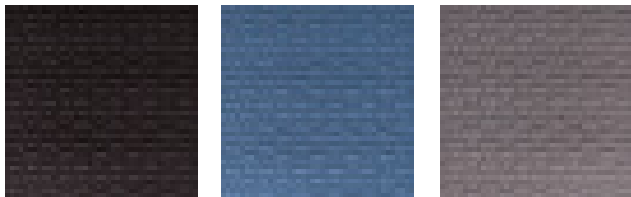
ESD Fabric



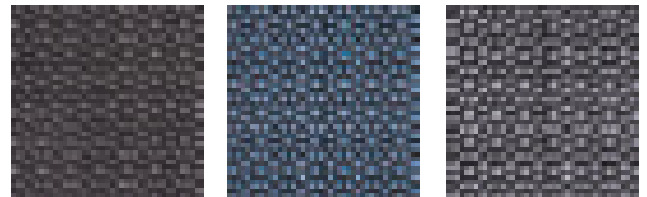
ESD Synthetic Leather



Integral Foam



Ultratec



FLEX STRIP



Cadmium orange (standard)



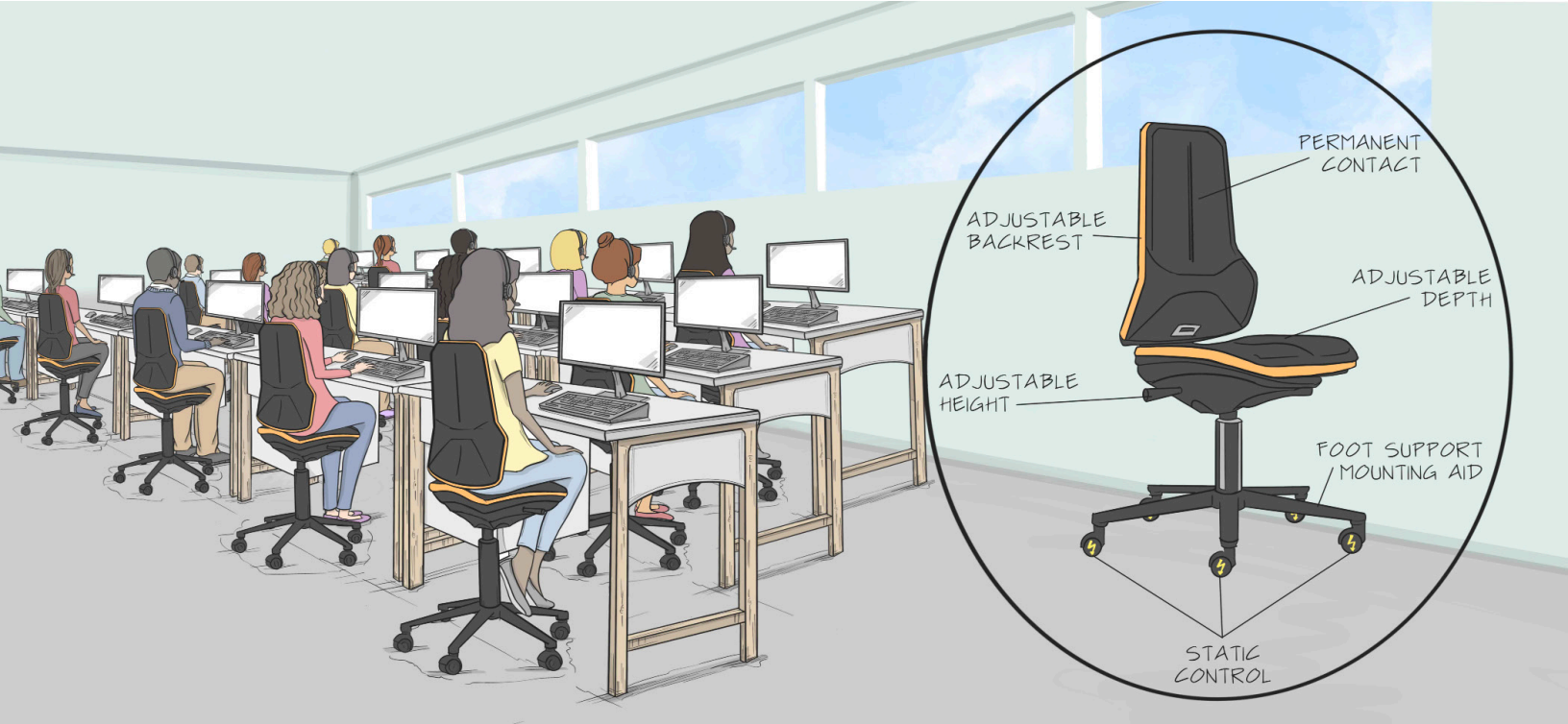
Neon green



Slate grey



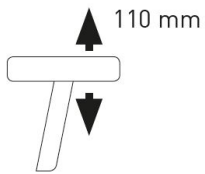
Electric blue



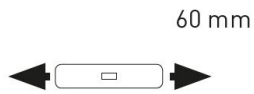
	BOLT 1 (with guides) Seat height 17.71 - 24.4 in	BOLT 2 (with castors) Seat height 17.71 - 24.4 in	BOLT 3 (high with mounting aid and glides) Seat height 22.22 - 34.25 in
FEATURES	<p>Meets ANSI/ESD S20.20</p> <p>Complies with STM12.1</p> <p>Ergonomic package Adjustable seat height Adjustable seat incline Adjustable seat depth Adjustable backrest height</p> <p>Aluminum base Black Optional: aluminum polished</p> <p>Backrest shell Black, conductive</p>	<p>Meets ANSI/ESD S20.20</p> <p>Complies with STM12.1</p> <p>Ergonomic package Adjustable seat height Adjustable seat incline Adjustable seat depth Adjustable backrest height</p> <p>Aluminum base Black Optional: aluminum polished</p> <p>Backrest shell Black, conductive</p> <p>Castors for hard floors</p>	<p>Meets ANSI/ESD S20.20</p> <p>Complies with STM12.1</p> <p>Ergonomic package Adjustable seat height Adjustable seat incline Adjustable seat depth Adjustable backrest height</p> <p>Aluminum base Black Optional: aluminum polished</p> <p>Backrest shell Black, conductive</p> <p>Height-adjustable mounting aid</p>



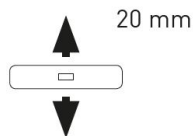
ACCESSORIES & OPTIONS



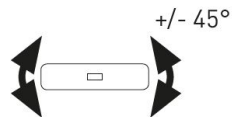
Height-adjustable



Depth-adjustable



Width-adjustable



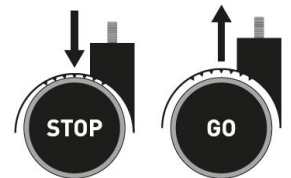
Swivellable



4D Arm Rests



Bolt Foot Ring



Stop & Go Castors