



STATIC DISSIPATIVE FLOORING FOR ACCESS FLOORS

GroundSafe[®] Certified for FAA Facilities and Emergency E-9-1-1 Dispatcher Centers



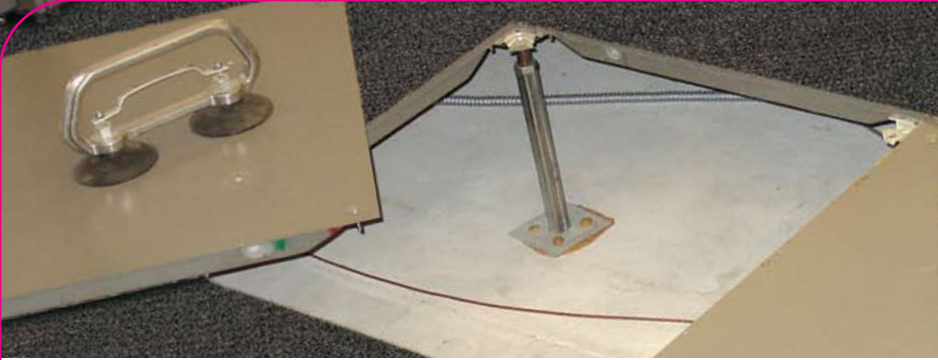
4115 Huntington Ravine – SHADOWFX	4114 Chesapeake Sandbar – SHADOWFX	4109 Forest Floor – SHADOWFX
6103 Presto – ECLIPSE RUBBER TILE	6105 Largo – ECLIPSE RUBBER TILE	
4111 Santa Fe – SHADOWFX	4112 Patagonia – ESD VINYL TILE	4113 Thunder Bay – SHADOWFX

Suggested matches of Staticworx ShadowFX[®] Carpet Tile, Staticworx Eclipse[®] EC Rubber Tile, and Staticworx ESD Vinyl Tile.

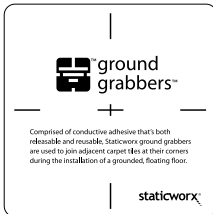


24" Available in 24" tile

Are you grounded?



Save time and labor: GroundSafe™ flooring systems that are as versatile as the raised access floor underneath.



GAIN QUICK ACCESS. REPOSITION TILE. DONE.

No digging up tiles trapped in tacky goo. Save time and money with quick access to panels and underfloor wiring. With Ground Grabbers installation pads, effortlessly reposition tiles, and enjoy easy maintenance by quickly replacing stained or damaged tiles. ShadowFX carpet tiles can be installed non-directionally without having to adhere to a pattern. Dimensionally stable, Staticworx tiles lie perfectly flat against floor panels—forming a consistently safe path to ground with the metal support structure of your raised access floor.

SHADOWFX + ground grabbers™ = SAVINGS

GLUELESS, GROUNDED, AND GREEN. With Ground Grabbers installation pads, VOCs (volatile organic compounds) are virtually eliminated, which translates to performing installations anytime, anywhere—no need to relocate employees or to install flooring during odd hours. Ground Grabbers have minimal impact on our planet, possessing less than 10% of the environmental footprint left behind by liquid adhesives.

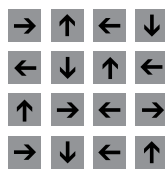
STATIC-SAFE FLOORING WITHOUT THE NEED FOR SPECIAL FOOTWEAR



- The ShadowFX and Eclipse flooring lines dissipate static safely when employees are wearing ordinary, everyday footwear.

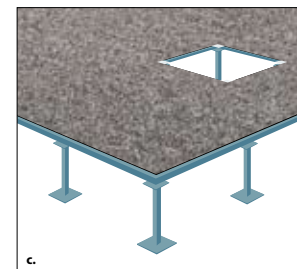
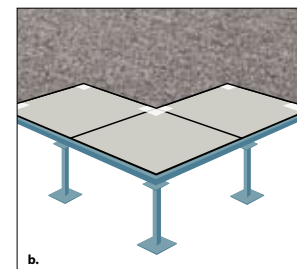
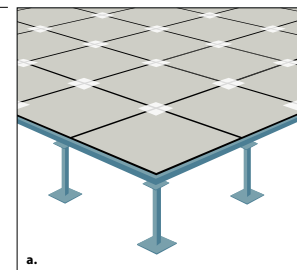
- Save money and the headaches that result in trying to implement and enforce protocols regarding the use of special footwear. Heal grounders and straps are not required.

RANDOM NON DIRECTIONAL TILES CAN BE POSITIONED IN ANY DIRECTION



NON-DIRECTIONAL

- Install non directional carpet tiles and rubber tiles without having to adhere to a designated layout pattern or direction.
- Pull up tiles to gain underfloor access and reposition tiles when finished — without having to match their original direction or orientation.



SIMPLE. NEAT. EASY ACCESS.

Ground Grabbers installation pads are positioned at every corner joint (figs. a and b). Glue-free access — remove and reposition carpet tiles easily (fig. c).

COMPLIES WITH IBM/BURROUGHS , MOTOROLA R56, FAA 019E AND ATIS 0600321:2010. MEETS OR EXCEEDS 911, FAA AND IBM DATA CENTER RECOMMENDATIONS.

A static-control floor should meet or exceed industry grounding standards. Motorola R56 and ATIS O600321.2010 are considered the definitive guides to site grounding and electrical protection for communication sites. These standards clearly define the best practice ohms resistance rating range for call centers, and both documents recommend at least 1 million ohms.