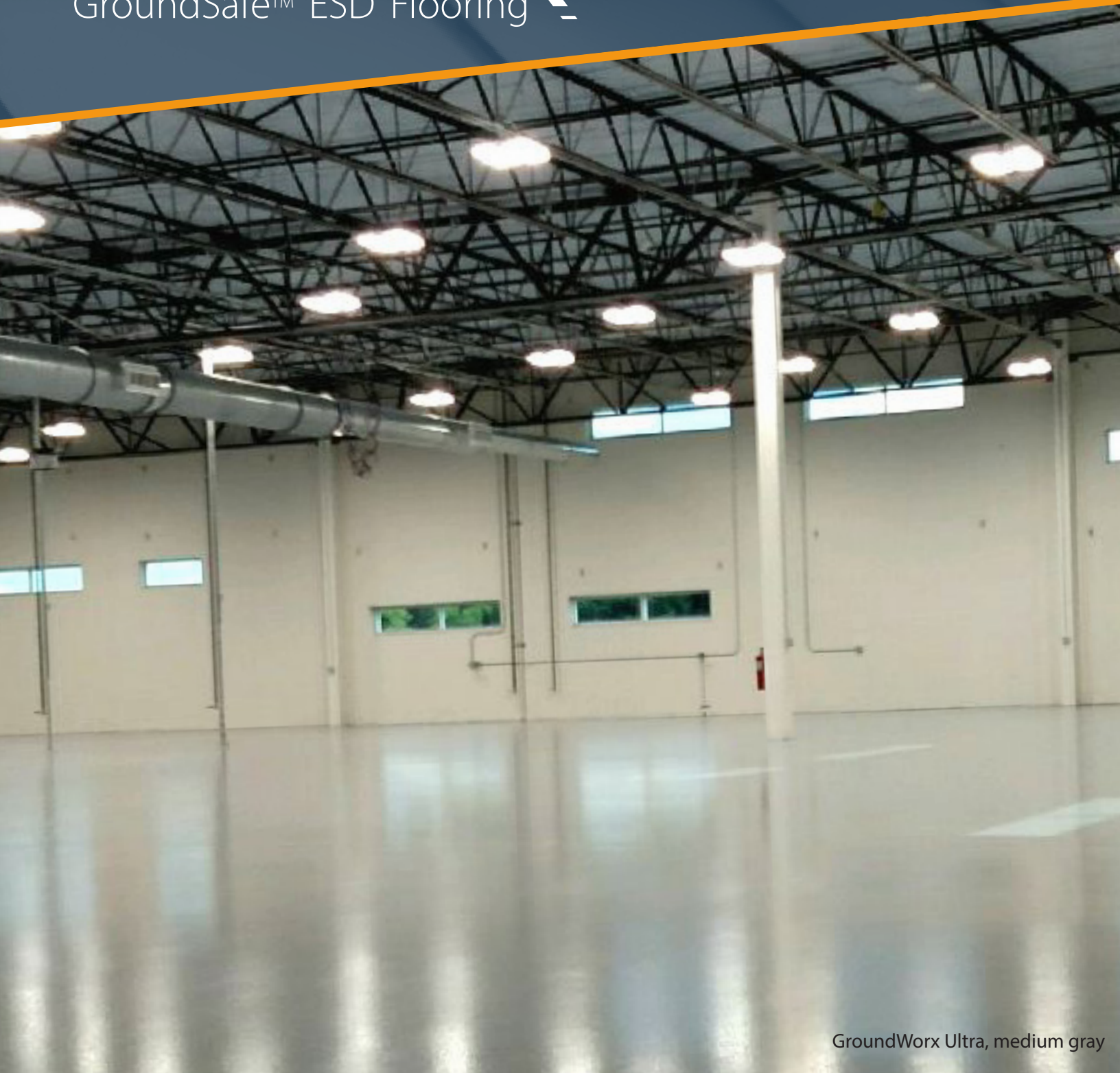


staticWorx®
GroundSafe™ ESD Flooring



GroundWorx Ultra, medium gray

GroundWorx™ **Ultra**

High-Performing ESD Floor — Provides Excellent Value at a Favorable Cost Point

Our premium ESD coating, GroundWorx™ Ultra provides a beautiful, high-performing static-free surface – for excellent value at a favorable cost point. With a tensile strength exceeding 6,000 pounds, GroundWorx Ultra is extremely durable. It's easy to install and is quick and cost effective to maintain.

Features

DURABLE

The urethane top coat is more durable than epoxy coatings, resistant to scratches and scuffing, with tensile strength that exceeds 6,000 pounds.

ATTRACTIVE

GroundWorx™ Ultra comes with an attractive, no-wax semi-gloss finish. The urethane top coat resists yellowing – the discoloration that occurs over time with regular epoxy floors. GroundWorx Ultra is available in a variety of colors, with custom color-matching for larger projects.

EASY TO INSTALL

GroundWorx™ Ultra is quick and easy to apply. Similar to regular floor coatings, the two-layer installation consists of 100% solids epoxy primer and conductive top coat, with no messy black middle layer. GX Ultra can be applied over most subfloors, including wood, VCT, existing coatings and concrete.

LOW COST/HIGH VALUE

With a material cost < \$2 per square foot (< \$2.50 with an elevated moisture primer), GroundWorx Ultra gives you a strong, highly durable ESD floor, with optimal ESD performance, at a budget friendly price.

GX Ultra is an ideal solution for both permanent and temporary use spaces.

MEETS ALL ANSI/ESD GUIDELINES FOR EPA-PROTECTED AREAS

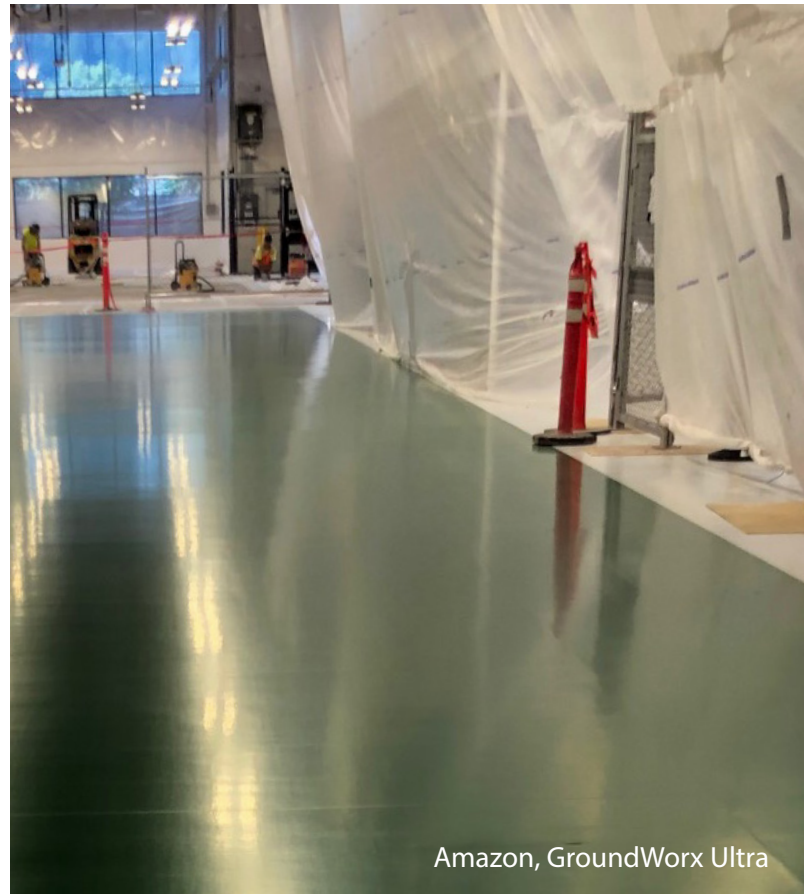
Meets ANSI/ESD S20.20 guidelines, as well as standards for telecommunications, FAA flight towers, and government and military applications.

PERFORMANCE

A Generation 3 ESD coating, GX Ultra's conductive top coat provides consistent ESD properties throughout the space.

GX Ultra can be manufactured in the conductive (EC) range (<10E6 ohms) or static-dissipative (SD) range (10E6 – 10E9 ohms).

Unlike most epoxy coatings, GroundWorx Ultra is a low static generating floor, with walking body voltage < 15V.



Amazon, GroundWorx Ultra

Application & Maintenance

SURFACE PREPARATION

Remove dirt, grease, oil and other contaminants by scrubbing with detergent and rinsing with clean water. Shot blasting or diamond grinding is the preferred method of preparation for concrete surfaces.

PREPARING PREVIOUSLY COATED FLOORS

If the floor has been previously coated, clean a small area, rough up with a screen disk using an 80-100 grit screen, and then apply sealer to test for adhesion, lifting, etc. Any areas of the existing coating that display poor adhesion should be stripped. Wash the stripped areas, acid etch, and rinse thoroughly. Allow the floor to dry.

APPLICATION

See written installation instructions for detail.

MAINTENANCE

Regularly sweep to avoid retention of dirt and grime which can dull the finish. Clean the floor using StaticWorx ScrubWorx pH-neutral ESD floor cleaner. ScrubWorx can be applied using a soft microfiber mop or an auto-scrubber with white cleaning pads.



GroundWorx Ultra, light blue

Specifications

DESCRIPTION	VALUE	TEST METHODS
Solids	100% (primer), 75% (top coat)	—
Resistance	2.5 x 10 ⁴ - 1.0 x 10 ⁶ Ω (conductive) 1.0 x 10 ⁶ - 1.0 x 10 ⁹ Ω (dissipative)	ANSI/ESD STM 7.1
System Resistance (w/ ESD Footwear)	< 3.5 x 10 ⁷ (fully compliant)	ANSI/ESD STM 97.1
Walking Body Voltage	< 15 volts	ANSI/ESD S97.2
Static Dissipation	5000 – 0 volts in <0.1 seconds	ASTM F-101C
Weight per Gallon	13 pounds	—
Hardness	2H	ASTM D3363
Viscosity	300-500 cPs	ASTM D2196
Flash Point	> 187° F	—
Dry Time	Touch: 8 hours; Traffic 18-24 hours	—
Water Resistance	8 hours - No Effect	—
Slip Resistance	> 0.55	ASTM D2047
Odor	Very low odor, non-hazardous	—
Gloss	Semi-Gloss	—
Indentation/Impact Resistance	140 in .lbs, Direct & Reverse	ASTM D2794
Abrasion Resistance	25 mg	ASTM D4060
Freeze/Thaw Resistance	Do Not Freeze	—
Dry Film Thickness	14-20 mils (varies by primer)	—
VOC Content	≤ 250 grams per liter (pigmented)	ASTM D3960

Chemical Resistances

CHEMICAL RESISTANCE (24-HOUR EXPOSURE TIME)

Acetic Acid (10% Solution)	Limited Negative Effect
Ammonium Hydroxide (10%)	No Effect
Ammonium Nitrate (20%)	No Effect
Benzene	No Effect
Bleach	No Effect
Brake Fluid	No Effect
Butyl Alcohol	No Effect
Carbon Tetrachloride	No Effect
Chloroform	No Effect
Citric Acid (10% Solution)	Limited Negative Effect
d-Limonene	No Effect
Ethyl Alcohol	No Effect
Ethylene Glycol	Limited Negative Effect
Gasoline	No Effect
Formaldehyde (40%)	No Effect
Gasoline	No Effect
Hydrochloric Acid (10%)	Limited Negative Effect
Hydrochloric Acid (30%)	Limited Negative Effect
Iodine	Yellow Staining
Isopropanol	Limited Negative Effect
Jet Fuel	No Effect
Methanol	Visible damage
Methylene Chloride	Visible Damage

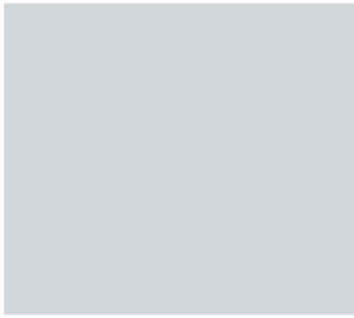
CHEMICAL RESISTANCE (24-HOUR EXPOSURE TIME)

Methyl Ethyl Ketone	Limited Negative Effect
Mineral Spirits	No Effect
Motor Oil	No Effect
Nitric Acid (10%)	Limited Negative Effect
Oleic Acid	No Effect
Phosphoric Acid (50%)	Limited Negative Effect
Skydrol	No Effect
Sodium Chloride (20%)	No Effect
Sodium Hydroxide (50%)	No Effect
Sulfuric Acid (37%)	Moderate Negative Effect
TSP (10%)	No Effect
Vegetable Oil	No Effect
Xylene	No Effect



GroundWorx Ultra, medium gray

Available Colors



Off-White



Light Gray



Medium Gray



Dark Gray



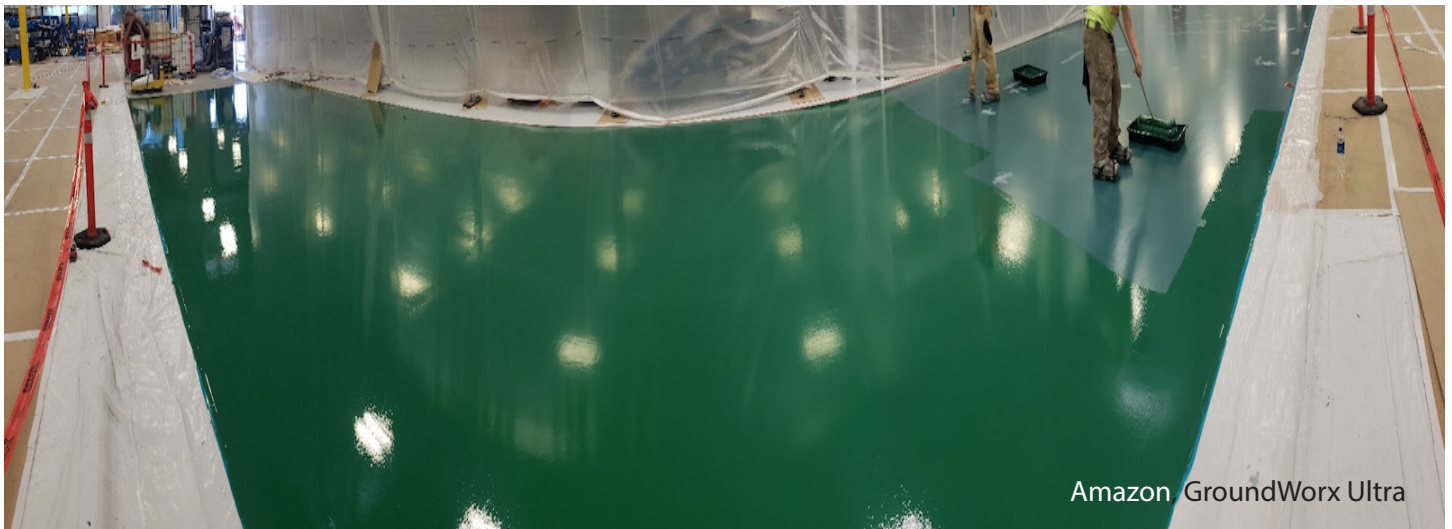
Umber



Light Blue



Beige



Amazon GroundWorx Ultra

StaticWorx®

372 Hurricane Ln Suite 201,
Williston, VT 05495

staticworx.com



Visit Webpage

617-923-2000
f: 617-467-5871
info@staticworx.com