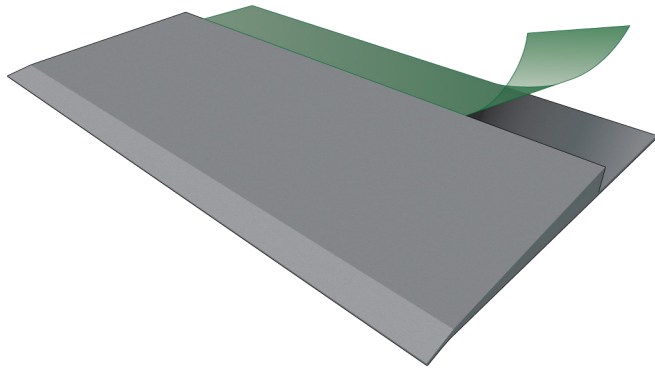


6mm PVC Ramp

The High Traffic Solution

staticWorx®
GroundSafe® ESD Flooring

- ☑ Designed for high mechanical traffic, such as manual pallet jacks & forklifts.
- ☑ 2m long x 7cm wide (visible part), 11cm total width



- ☑ Ready to install: pre-adhesive ramp (below the ramp & on the top)
- ☑ 100% flexible PVC: no scratch, no crack, floor defaults absorption
- ☑ Designed for 6 mm flooring



TIME SAVING NO STRESS

(easy to install, easy to cut, no floor damage)



LONG LIFE MONEY SAVING

(high resistance to damage from mechanical traffic)



MATCHES STATICWORX GROUNDLOCK EXTREME

StaticWorx®

P.O. Box 1556,
Williston, VT 05495

617-923-2000

fax: 617-467-5871

staticworx.com

We Keep You Grounded



CUT: Use classic mitre shears



GLUE: Remove protective film from adhesive tape

6mm PVC Ramp Installation Instructions

EQUIPMENT NEEDED

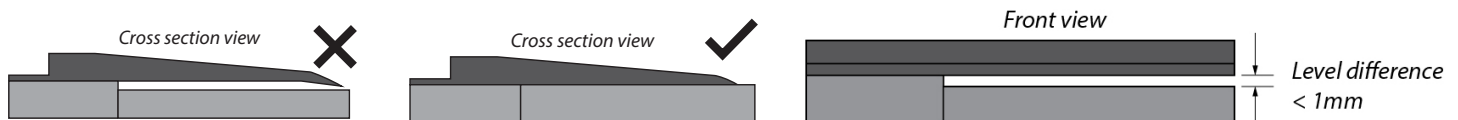
Cutter with straight and hook blade

1. SURFACE PREPARATION

The ramp can be installed on various flooring surfaces, including: tile, concrete, resin, old PVC coverings.

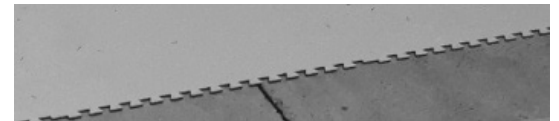
Before installing the ramp:

- Ensure that the surface is flat, smooth, soundly constructed and free from all contamination.
- Remove dust and grease from the area on which the ramp will be installed using an alcohol-based non-film forming degreaser.
- Use a roller to apply a universal primer to the floor area on which the ramp will be installed (drying time at least 2 h).



2. CUTTING THE TILES

- Draw a line using a rule or chalk line.
- Cut using the straight blade cutter, guillotine or circular saw.



3. INSTALLING THE RAMPS

A. For aligned profiles

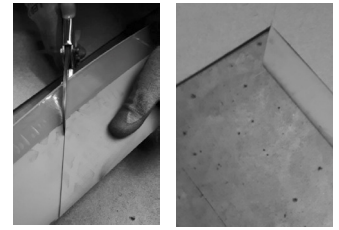
- Measure then cut the required length using the mitre shears.
- If several lengths are necessary, be careful not to position the join between two ramps in the center of the traffic area. Instead have it offset on one edge.
- Remove the edge of the protective film from the adhesive tape intended to tape the tiles (upper part).
- Place the ramp against the tiles.
- Remove the rest of the protective film from the adhesive, pressing and sticking the tiles as you go.



IMPORTANT : The information in this document is valid from: 01/09/2020 and is subject to change without prior notice. We are continuously making technical improvements to our products; before starting any work, our customers should check with us that this document is still in force.

B. Profiles with 45°mitre cut

- In addition to the previous steps, make sure that you make the 45° mitre cuts using the appropriate mitre shears.



Regardless of the configuration, use the grooving tool between the tiles and ramps, as well as between each ramp joint.

- Gently lift the “tiles + ramps” assembly.
- Be sure the surface is clean.
- Next remove the protective film from the adhesive tape, placed under the ramp. Then press and stick the assembly down onto the surface.
- Smooth with the pressure roller for optimal and even adhesion.



6mm PVC Ramp Specifications

DESCRIPTION		
Description		PVC ramp suitable for 6mm thick floor covering. It has pre-installed adhesive and can be removed without damaging the floor.
Installation		Adhesive to the floor and adhesive to the floor covering
Material		PVC
Shore A		87 +/-2
Weight	g/lm	583 +/- 30
Length	lm	2
Width	mm	Full width : 110 Visible width : 70
Overall thickness	mm	7.9
Packaging	lm/box	16 (8 lengths)
Color		Lead (dark gray)
Product code		0500

