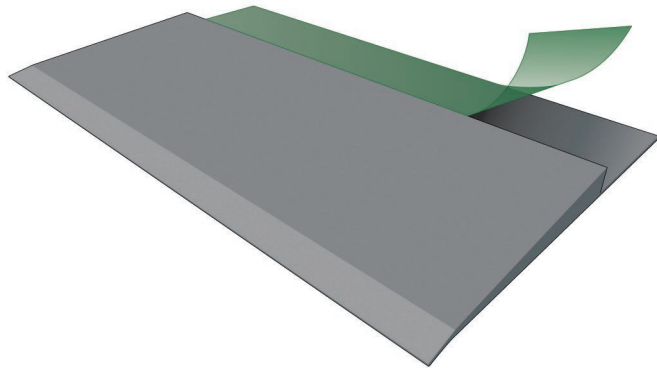


# 6mm PVC Ramp

## The High Traffic Solution

- ☑ Designed for high mechanical traffic, such as manual pallet jacks & forklifts.
- ☑ 2m long x 7cm wide (visible part), 11cm total width



- ☑ Ready to install: pre-adhesive ramp (below the ramp & on the top)
- ☑ 100% flexible PVC: no scratch, no crack, floor defaults absorption
- ☑ Designed for 6 mm flooring



### TIME SAVING NO STRESS

(easy to install, easy to cut, no floor damage)



### LONG LIFE MONEY SAVING

(high resistance to damage from mechanical traffic)



### MATCHES STATICWORX GROUNDLOCK EXTREME

#### StaticWorx<sup>®</sup>

372 Hurricane Ln Suite 201,  
Williston, VT 05495

617-923-2000

fax: 617-467-5871

[staticworx.com](http://staticworx.com)

We Keep You Grounded



**CUT:** Use classic mitre shears



**GLUE:** Remove protective film from adhesive tape

# 6mm PVC Ramp Installation Instructions

## EQUIPMENT NEEDED

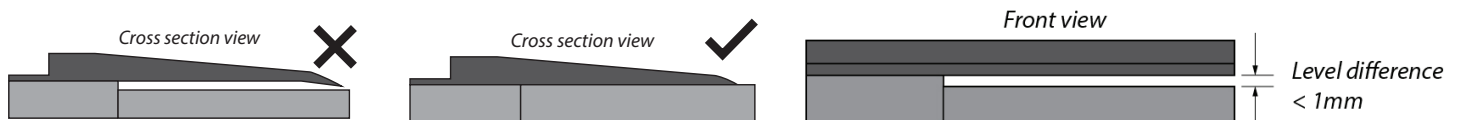
Cutter with straight and hook blade

## 1. SURFACE PREPARATION

The ramp can be installed on various flooring surfaces, including: tile, concrete, resin, old PVC coverings.

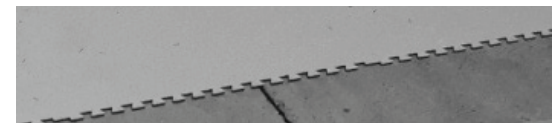
Before installing the ramp:

- Ensure that the surface is flat, smooth, soundly constructed and free from all contamination.
- Remove dust and grease from the area on which the ramp will be installed using an alcohol-based non-film forming degreaser.
- Use a roller to apply a universal primer to the floor area on which the ramp will be installed (drying time at least 2 h).



## 2. CUTTING THE TILES

- Draw a line using a rule or chalk line.
- Cut using the straight blade cutter, guillotine or circular saw.



## 3. INSTALLING THE RAMPS

### A. For aligned profiles

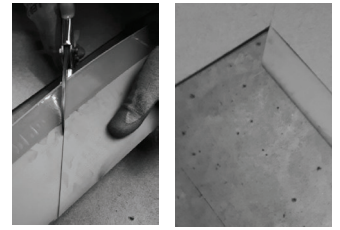
- Measure then cut the required length using the mitre shears.
- If several lengths are necessary, be careful not to position the join between two ramps in the center of the traffic area. Instead have it offset on one edge.
- Remove the edge of the protective film from the adhesive tape intended to tape the tiles (upper part).
- Place the ramp against the tiles.
- Remove the rest of the protective film from the adhesive, pressing and sticking the tiles as you go.



*IMPORTANT : The information in this document is valid from: 01/09/2020 and is subject to change without prior notice. We are continuously making technical improvements to our products; before starting any work, our customers should check with us that this document is still in force.*

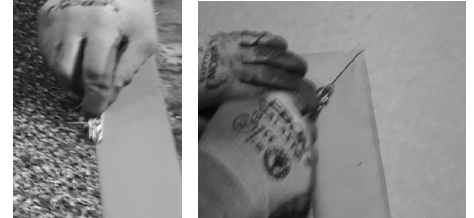
## B. Profiles with 45°mitre cut

- In addition to the previous steps, make sure that you make the 45° mitre cuts using the appropriate mitre shears.



Regardless of the configuration, use the grooving tool between the tiles and ramps, as well as between each ramp joint.

- Gently lift the “tiles + ramps” assembly.
- Be sure the surface is clean.
- Next remove the protective film from the adhesive tape, placed under the ramp. Then press and stick the assembly down onto the surface.
- Smooth with the pressure roller for optimal and even adhesion.



# 6mm PVC Ramp Specifications

DESCRIPTION		
Description		PVC ramp suitable for 6mm thick floor covering. It has pre-installed adhesive and can be removed without damaging the floor.
Installation		Adhesive to the floor and adhesive to the floor covering
Material		PVC
Shore A		87 +/-2
Weight	g/lm	583 +/- 30
Length	lm	2
Width	mm	Full width : 110 Visible width : 70
Overall thickness	mm	7.9
Packaging	lm/box	16 (8 lengths)
Color		Lead (dark gray)
Product code		0500

