

**staticWorx**<sup>®</sup>  
GroundSafe<sup>®</sup> ESD Flooring



StaticWorx Award-winning  
**Eclipse Rubber**

Electrically  
Conductive

The only fault-tolerant ESD floor



## ECLIPSE RUBBER - when static discharge can't be tolerated

ESD analysts recommend rubber flooring for applications where static discharge can't be tolerated. Rubber has inherent anti-static properties, meaning it inhibits static generation naturally - without the use of special ESD-protective footwear.

Eclipse Rubber - our flagship, award-winning line of rubber flooring - is often the preferred choice of architects, contractors and facility managers for cleanrooms, labs, and electronics manufacturing and handling facilities, as well as 24/7 operations such as server rooms, hospitals, data and critical call centers, schools, and more.

Eclipse Rubber comes with a Lifetime Conductivity Warranty...and it brings you lifetime peace of mind.



Laboratory



Manufacturing Facility

## ECLIPSE EC is available in tile and rolls

StaticWorx launched Eclipse EC (Electrically Conductive) rubber in 2010 - the industry's only fault-tolerant, low-charging ESD floor.

Eclipse EC won the Seal of Approval from *ESD Journal* as the only product suitable for Class-0 ESD (electrostatic discharge) applications. Research performed by an independent lab found EC rubber to be the only product that inhibits static generation regardless of footwear. And it was voted a top, money-saving product by *Buildings*.

Eclipse EC rubber is available in sheets as well as tiles. It can cover an entire room or be installed strategically as a floor mat, runner, or small island.



Laboratory

## Benefits of **ECLIPSE EC** Rubber

<b>Static-free</b>	Yes
<b>Environmentally friendly</b>	Yes
<b>Fault-tolerant</b>	Yes
<b>Has antistatic attributes</b>	Yes
<b>Can be installed seamless</b>	Yes
<b>Meets ANSI/ESD S20.20</b>	Yes
<b>Meets BS EN 61340-5-1 2010</b>	Yes
<b>Can be seam-welded</b>	Yes
<b>Glue-free</b>	No
<b>Moisture-resistant</b>	No



Cleanroom



9-1-1 Call Center

**Eclipse EC has zero red-listed items (per LBC)**



Electrostatic Discharge (ESD) affects two different environments:

Type 1 – Electronics manufacturing and component handling

Static generation must be < 100 volts

Type 2 – End-user spaces such as call centers, control rooms, data centers, server rooms, banking, and government offices (among others).

In these spaces, static generation must be < 400 volts.

## ESD PERFORMANCE **ECLIPSE EC** RUBBER

### With ESD footwear

Less than 20 volts (.02 kV)

### With ordinary footwear

Less than 400 volts (.4 kV)



*Electronics Handling*

## **ECLIPSE RUBBER** - No Footwear Requirements in End-user Environments

Is your workspace an end-user environment such as a 9-1-1 dispatch operation, critical call center, telecom facility, flight tower, or bank?\*

Can you reasonably expect employees to wear special footwear or heel or toe straps?

If the answer is no, it's wise to select a floor that inhibits static generation without the use of ESD-protective footwear.

With fault tolerant flooring:

- People can wear the wrong shoes and still be protected.
- Waxes, polishes, and sprays need not be applied.
- Humidity, temperature, and traffic, which can affect static generation on some floors, are not part of the equation.

In end-user spaces, Eclipse EC rubber inhibits static regardless of footwear.

\* Other end-user environments include government offices, media control rooms, server rooms, data centers, etc.

The first flooring product that inhibits static regardless of footwear? EclipseEC Rubber.

Which do people wear in your facility?



**Unlike vinyl and resinous coatings, EclipseRubber is an inherently low-charging material, easy to maintain, and sustainable.**

## Static Charge Generation Based on Footwear

Static Generated While Walking (Volts)

≥5000

Standard,  
Non-ESD  
Flooring

≥3500

PVC and  
Epoxy ESD  
Floors

<400

staticworx  
Eclipse EC  
Rubber

<20

staticworx  
Eclipse EC  
Rubber  
with ESD Footwear

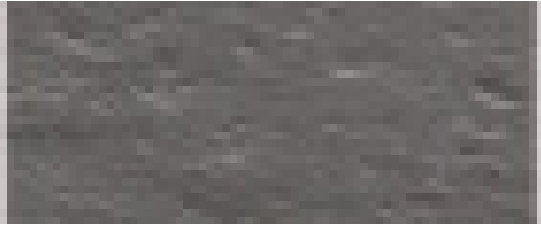
**This chart shows static generated when people walk on floors wearing regular (non-ESD) street shoes.**  
*Applicable to data centers, server rooms, flight towers, PSAPs, critical call centers, government offices, banking and other critical end-user spaces.*  
*For electronics applications, which require charge generation to be below 100 volts, it's necessary to use ESD-protective footwear.*



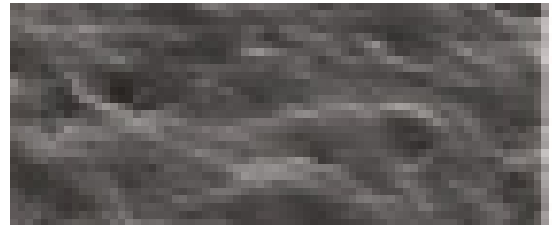
ESD Protected Area

## Maintenance

Maintenance requires only soap and water, not wax. Unlike the pore-filled surface of PVC floor tiles, Eclipse Rubber won't collect dirt, resulting in lower cost of ownership.



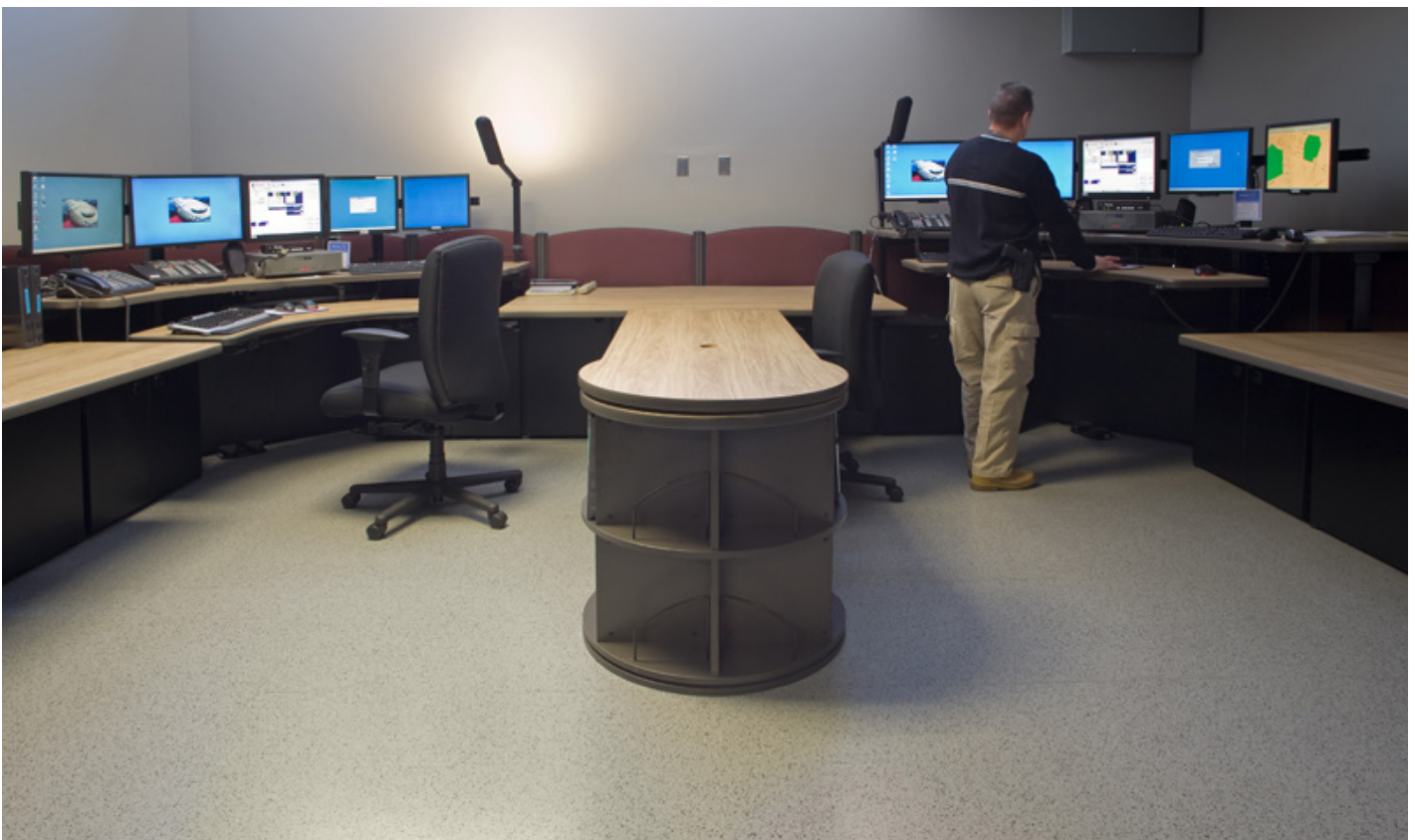
The surface of StaticWorx® Eclipse Rubber magnified 100:1



Large dirt collecting pores in plastic PVC floor tile magnified 100:1

## Slip-Resistant, Sound-dampening, Anti-Fatigue

Eclipse Rubber is also slip-resistant, with sound-dampening properties that make it ideal in 24/7 operational spaces.



*Police Department*



# ECLIPSE RUBBER

## IS PVC FREE

Eclipse Rubber has been recognized as an environmentally friendly, green product that has earned GREENGUARD Certification for indoor air quality.

What makes Eclipse Rubber good for the environment?

- No PVC
- No plasticizers
- No urethane
- No phthalates
- No halogens
- No chemicals or waxes needed for cleaning
- GREENGUARD gold certified

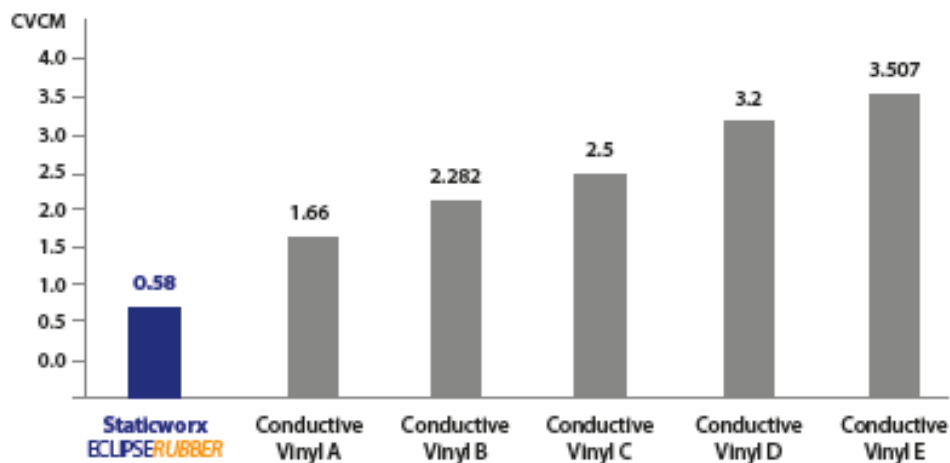
### Minimal Outgassing

Conductive rubber flooring performs well in elevated temperature out-gassing tests because rubber is made without plasticizers.



*Imaging Room*

## OUTGASSING COMPARISON ACCORDING TO ASTM-E 595



\*Tests performed by an independent testing company

CVCM stands for collected volatile condensable material – the quantity of outgassed matter from a test specimen that condenses on a collector maintained at a specific constant temperature for a specified time. CVCM is expressed as a percentage of the initial specimen mass and is calculated from the condensate mass determined from the difference in mass of the collector plate before and after the test.

# ECLIPSE **RUBBER** IS STATIC FREE

Perhaps most importantly, Eclipse Rubber is static-free and meets all the critical domestic and international industry standards, including::

- NFPA 99 (healthcare)
- ANSI/ESD S20/20, ANSI/ESD S97.1 (system resistance)
- ANSI/ESD 97.2 (body voltage generation)
- DOD 4145.26-M (munitions handling)
- NASA-grade, clean-room requirements



*Electronics Aisle*

## ECLIPSE **RUBBER** SPECIFICATIONS

<b>Construction:</b>	Two-layer, vulcanized conductive rubber
<b>Thickness:</b>	2 mm
<b>Total Weight:</b>	N/A
<b>Size - EclipseEC:</b>	4' x 39.37' rolls and 24" x 24" tile
<b>Static Generation</b>	Less than 10 Volts per ESD STM 97.2
<b>Abrasion Resistance:</b>	ASTM D 3389 H-18 wheel, 500gm load
<b>Taber Abrasion Test:</b>	ASTM D 3389, H-18 wheel, 500 gram load, 1000 cycles, gram weight loss not greater than 0.70
<b>System Resistance:</b>	$< 1.0 \times 10^6$



Presto



Largo



Cantata  
(special order)



### ***The technical information on this card does not apply to static-dissipative rubber***

*All referenced studies were performed using electrically conductive (EC) rubber. The labs did not test static-dissipative rubber; test results for conductive rubber do not apply to dissipative rubber.*

*Static-dissipative rubber is a different ESD product with a different formulation and different static-control properties. For more information, call StaticWorx: 617-923-2000*



## STATBOND™ PRESSURE-SENSITIVE (PS) ADHESIVE

A solvent free, conductive acrylic adhesive engineered for use with any conductive or static-dissipative rubber or vinyl floor covering. Statbond pressure-sensitive adhesive creates a permanent conductive bond between the ESD flooring material and the subfloor. Well-suited for any area requiring a strong, permanent bond.

StatBond PS can be used on all grades of concrete - on, above or below grade - in the absence of moisture as well as over suspended, approved wood floors (APA.)

StatBond PS can be spread over a large area and allowed to dry before installing tiles. No oozing of adhesive into seams when the floor is rolled, allowing for easy clean-up with no seepage or mess.

- FloorScore® Certified by SCS Global Services
- Solvent Free
- Provides LEED points
- Non-flammable
- Excellent conductivity
- For porous and non-porous surfaces
- No mixing required
- Easy cleanup
- Easy to trowel
- Exceptional side-to-side stability
- No odor, no VOC's
- Anti-microbial
- Permanent bond
- Ideal for rugged applications
- Partially used containers can be resealed
- Meets ANSI/ESD S20.20 with StaticWorx Flooring

### TESTED FOR

- Shelf Life (ASTM D1337)
- Freeze-thaw stability (ASTM D7149)
- Adhesive Shear Strength (ASTM D6004)
- Plasticizer Resistance (ASTM D7888)
- 90° Peel Resistance (ASTM D6862)
- Heat Aged Expansion/Contraction
- Caster Chair Tolerance (ISO 4918)
- PACKAGING: Available in 1-gallon and 4-gallon pails.
- COVERAGE: Approximately 180 - 220sq. ft. per gallon

## About StaticWorx

StaticWorx manufactures the highest quality ESD flooring products available today. Our company has installed tens of millions of square feet of ESD flooring throughout the U.S., Canada, Mexico, Australia, Singapore, New Zealand and the U.K.

Some of our clients include EMC Corporation, BAE Systems, Benchmark, Flex, Lockheed Martin, Microsoft, Philips Healthcare, Amazon, Apple, Intel, Google, and Facebook.

All StaticWorx products are made in ISO-9000 certified factories and undergo rigorous testing by independent laboratories prior to shipment.

For clients who prefer a worry-free project, StaticWorx will help choose the best floor for the specific application, match your project with our best flooring installation team, oversee the installation, and test your new floor's electrical properties to be sure the floor meets your specifications.

“The StaticWorx seminar may be the best AIA presentation I've sat through over the past 10 years. I recommend it to any architect or engineer that may have projects with static-control flooring.”

Brian Frels  
AIA, NCARB - Principal ARIUM ae

To schedule a Zoom ESD training session or AIA (architects') CEU workshop, please contact us at [info@staticworx.com](mailto:info@staticworx.com)  
Or call: 617-923-2000

**staticWorx®**  
GroundSafe® ESD Flooring



Visit webpage

P.O. Box 1556,  
Williston,  
VT 05495

617-923-2000  
f: 617-467-5871  
[info@staticworx.com](mailto:info@staticworx.com)

**staticworx.com**